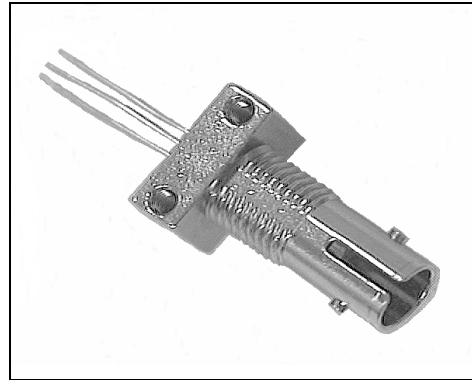


GFE1300-547

1300 nm Edge Emitting LED

FEATURES

- Typically 15 μ W into 9/125 μ m fibre with 1ms pulse at 100 mA
- Pulse at 100 mA
- Spectral width 60 nm
- Bandwidth of 200 MHz
- Operating temperature -10°C to +65°C



OPHO_229.doc

DESCRIPTION

The GFE1300-547 is a high performance 1300 nm Edge emitting LED specifically designed for coupling high power into Monomode optical fibers.

When pulsed at 100mA typical coupled power into 9/125 μ m fiber is 15 μ W. Bandwidth is typically 200 MHz.

Where applicable, standard pin orientation aligns pin 2 with the receptacle keyway. This orientation will be supplied unless requested otherwise.

The heatsink tab is removed to allow alignment in some receptacles.

This device is very susceptible to damage by electrostatic discharge.

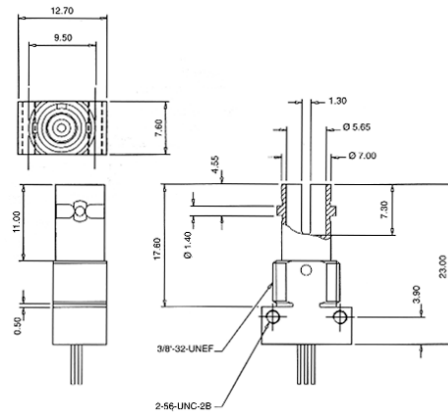
All dimensions are in millimetres. Tolerances are ± 0.10 mm unless otherwise stated.

Receptacle illustrated with typical active device installed.

High precision ceramic bore.

Device alignment to fibre tested with AT&T ST2 connector.

OUTLINE DIMENSIONS in inches (mm)



ODIM_234.tif

Pinout

1. Cathode
2. Anode
3. Case

ST is a registered trademark of AT & T.

GFE1300-547

1300 nm Edge Emitting LED

ELECTRO-OPTICAL CHARACTERISTICS

PARAMETER	SYMBOL	MIN	TYP	MAX	UNITS	TEST CONDITIONS
Power (9/125 μm NA0.11)	P_{FIBRE}	8	15		μW	$I_{\text{F}} = 100 \text{ mA}$
Power (50/125 μm NA 0.20)		40	50			1ms pulse
Power (62.5/125 μm NA 0.27)			70			
Peak emission wavelength	λ_{P}	1270	1300	1330	nm	$I_{\text{F}} = 100 \text{ mA}$
Spectral width between half power point	$\Delta\lambda$		60	100	nm	$I_{\text{F}} = 100 \text{ mA}$
-3dB Bandwidth	f_{c}		200		MHz	$I_{\text{F}} = 100 \text{ mA}$ +20 mAdp
Forward Voltage	V_{F}		1.6	2.0	V	$I_{\text{F}} = 100 \text{ mA}$
Connectorised power repeatability				± 1.5	dB	(1)

Notes

1. Applies to 9/125 μm fibre terminated with a recommended ceramic ferrule in group B receptacles.

LIMITING VALUES

PARAMETER	SYMBOL	MIN	TYP	MAX	UNITS	TEST CONDITIONS
Continuous forward current	I_{F}		110		mA	
Repetitive peak forward current	I_{FRM}		150		mA	50% duty cycle
Reverse Voltage	V_{R}		1.0		V	
Operating temperature	T_{AMB}	-10		+65	$^{\circ}\text{C}$	
Storage temperature	T_{STG}	-40		+65	$^{\circ}\text{C}$	
Soldering temperature	T_{SLD}		260		$^{\circ}\text{C}$	2 mm form the case for 10 s

THERMAL CHARACTERISTICS

PARAMETER	SYMBOL	MIN	TYP	MAX	UNITS	TEST CONDITIONS
Radiant power temperature coefficient	dP/dT_{J}		-3.5		$\%/^{\circ}\text{C}$	
Wavelength temperature coefficient	$d\lambda/dT_{\text{J}}$		0.8		$\text{nm}/^{\circ}\text{C}$	

ABSOLUTE MAXIMUM RATINGS

(25 $^{\circ}\text{C}$ Free-Air Temperature unless otherwise noted)

Storage temperature	-55 to +100 $^{\circ}\text{C}$
Case operating temperature	-40 to +100 $^{\circ}\text{C}$
Lead solder temperature	260 $^{\circ}\text{C}$, 10s
Continuous forward current (heat sunked)	100 mA
Reverse voltage	1 V @ 10 μA

Stresses greater than those listed under "Absolute Maximum Ratings" may cause permanent damage to the device. This is a stress rating only and functional operation of the device at these or any other conditions above those indicated in the operational section of this specification is not implied. Exposure to absolute maximum rating conditions for extended periods of time may affect reliability.

GFE1300-547

1300 nm Edge Emitting LED

ORDER GUIDE

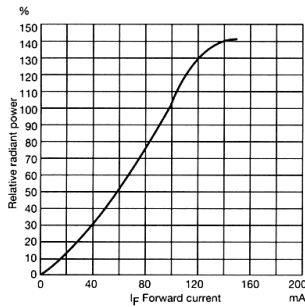
Description	Catalog Listing
1300 nm Surface emitting LED	GFE1300-547

CAUTION

The inherent design of this component causes it to be sensitive to electrostatic discharge (ESD). To prevent ESD-induced damage and/or degradation to equipment, take normal ESD precautions when handling this product.

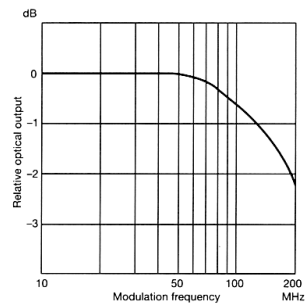


Fig. 1



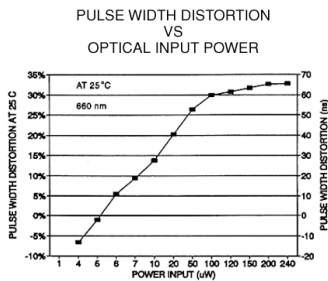
OGRA_159.tif

Fig. 2



OGRA_160.tif

Fig. 3



OGRA_161.tif